

D-33



DOMINION SQUARE BUILDING

Canada's Supreme Business Location

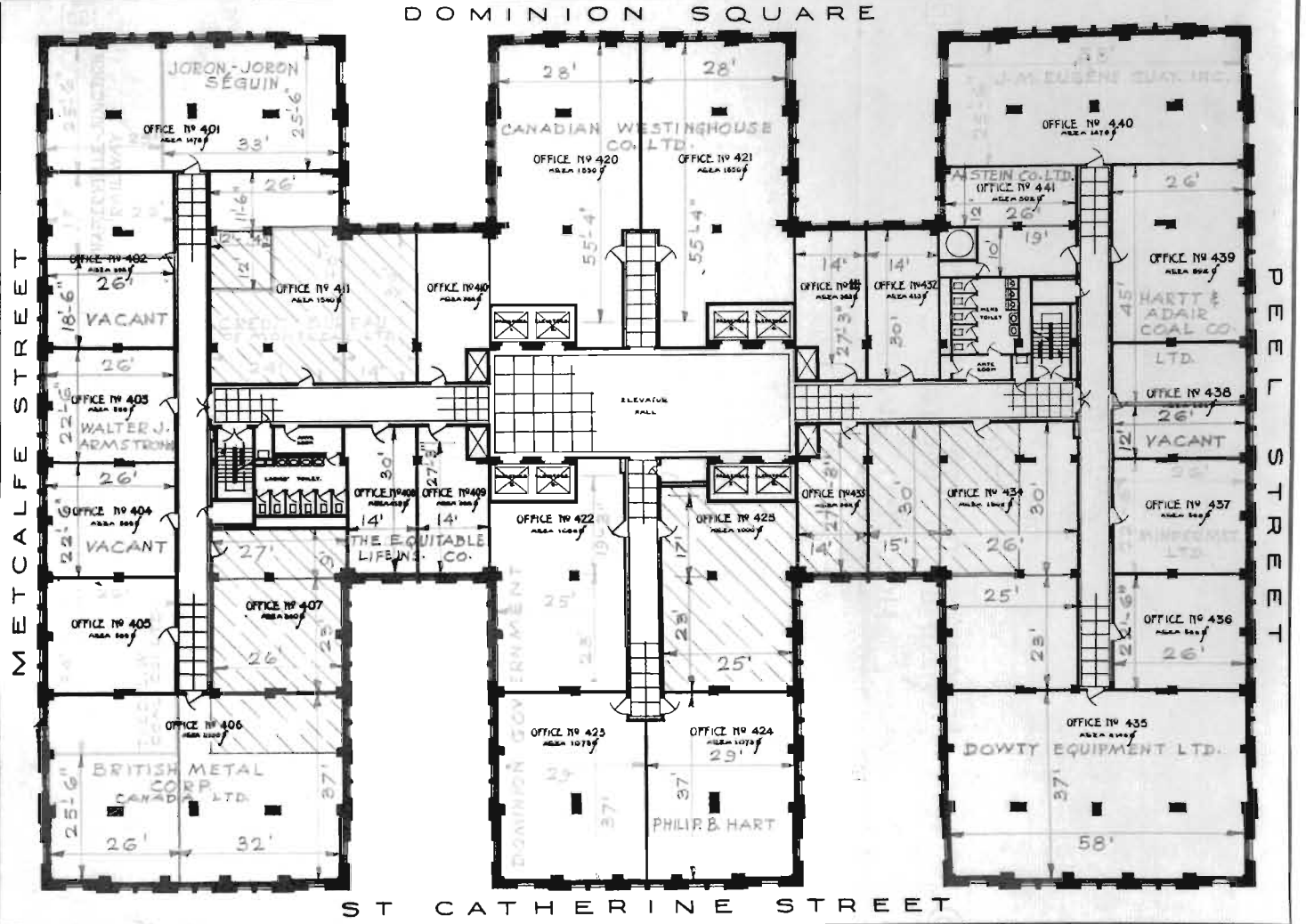
ST. CATHERINE, PEEL, METCALFE STS.
AND DOMINION SQUARE

Plan of
Floors Nos. 4 to 8

SCALE 0 16 32 48 FEET

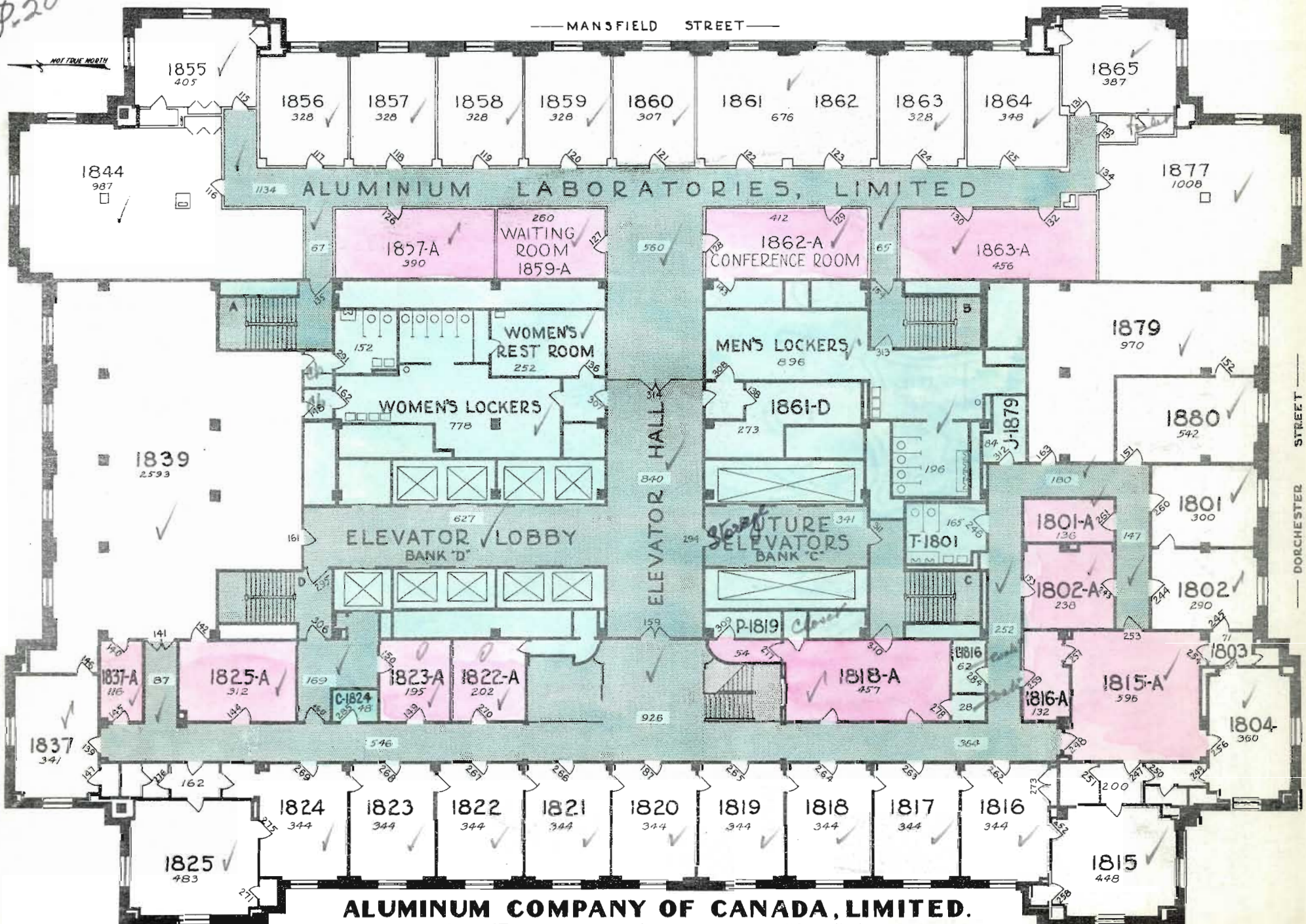
D. W. OGILVIE & COMPANY INC.

Exclusive Renting Agents and Building Managers
540 DOMINION SQUARE BUILDING, MONTREAL
Telephone HArbor 8201



P-20

— MANSFIELD STREET —



ALUMINUM COMPANY OF CANADA, LIMITED.
18TH FLOOR, SUN LIFE BUILDING

DRAWN BY C. KING JULY 1940

0 5 10 15 20 FT
 SCALE

NOTE: THE NUMBERS IN ITALICS SHOW AREAS IN SQUARE FEET.



VIEW SHOWING

FORM & STATIONERY ROOM

FIRST BASEMENT SOUTH SIDE

APRIL 14, 1943

P. 53-A.



VIEW SHOWING

SUPPLY ROOM & SHIPPING ROOM

FIRST BASEMENT WEST SIDE

APRIL 14, 1943

P. 53 - B.



VIEW SHOWING

INACTIVE FILE ROOM

SECOND BASEMENT WEST SIDE LOOKING SOUTH

APRIL 14, 1943

P. 54-A-



VIEW SHOWING

INACTIVE FILE ROOM

SECOND BASEMENT WEST SIDE LOOKING SOUTH

APRIL 14, 1943

P. 54-B.

SUN LIFE VALUATION APPEAL

Valuation by Owen Lobley

EXHIBIT "A"

P. 6.

3:1:43



TOP BLOCK

SECOND BLOCK

MAIN BLOCK

- 25TH
- 24TH
- 23RD
- 22ND
- 21ST
- 20TH
- 19TH
- 18TH
- 17TH
- 16A
- 16TH
- 15TH
- 14TH
- 12TH
- 11TH
- 10TH
- 9TH
- 8TH
- 7A
- 7TH
- 6TH
- 5TH
- 4TH
- 3RD
- 2ND
- 1ST

GROUND



Room 1440
11 a.m. March 25/43
Bright sunny day
Hec



10.30 a.m Room 1615 Consolidated papers
bright sunny day. lsh.



Room 1619 - Consolidated Paper Co
March 25/43 11 a.m. bright sunny day
1st





1. VIEW OF WINDOW ON WEST SIDE OF 20TH FLOOR SHOWING POSITION OF BALUSTRADE OUTSIDE OF WINDOW

Weather Condition	Clear, bright sunshine
Time of Day	11.40 a.m.
Location of Window	4th from N.W. corner
Location of Camera	24 ft. from window at desk height

P. 27



2. VIEW OF WINDOW ON EAST SIDE OF 20TH FLOOR SHOWING POSITION OF BALUSTRADE OUTSIDE OF WINDOW

Weather Condition	Clear, bright sunshine
Time of Day	11.46 a.m.
Location of Window	2nd from N.E. corner
Location of Camera	24 ft. from window at desk height

P. 27.



3. VIEW OF WINDOW ON NORTH SIDE OF 20TH FLOOR SHOWING POSITION OF BALUSTRADE OUTSIDE OF WINDOW

Weather Condition	Clear, bright sunshine
Time of Day	11.55 a.m.
Location of Window	2nd from N.E. corner
Location of Camera	24 ft. from window at desk height

P. 27



4. VIEW OF WINDOW ON SOUTH SIDE OF 20TH FLOOR SHOWING POSITION OF BALUSTRADE OUTSIDE OF WINDOW

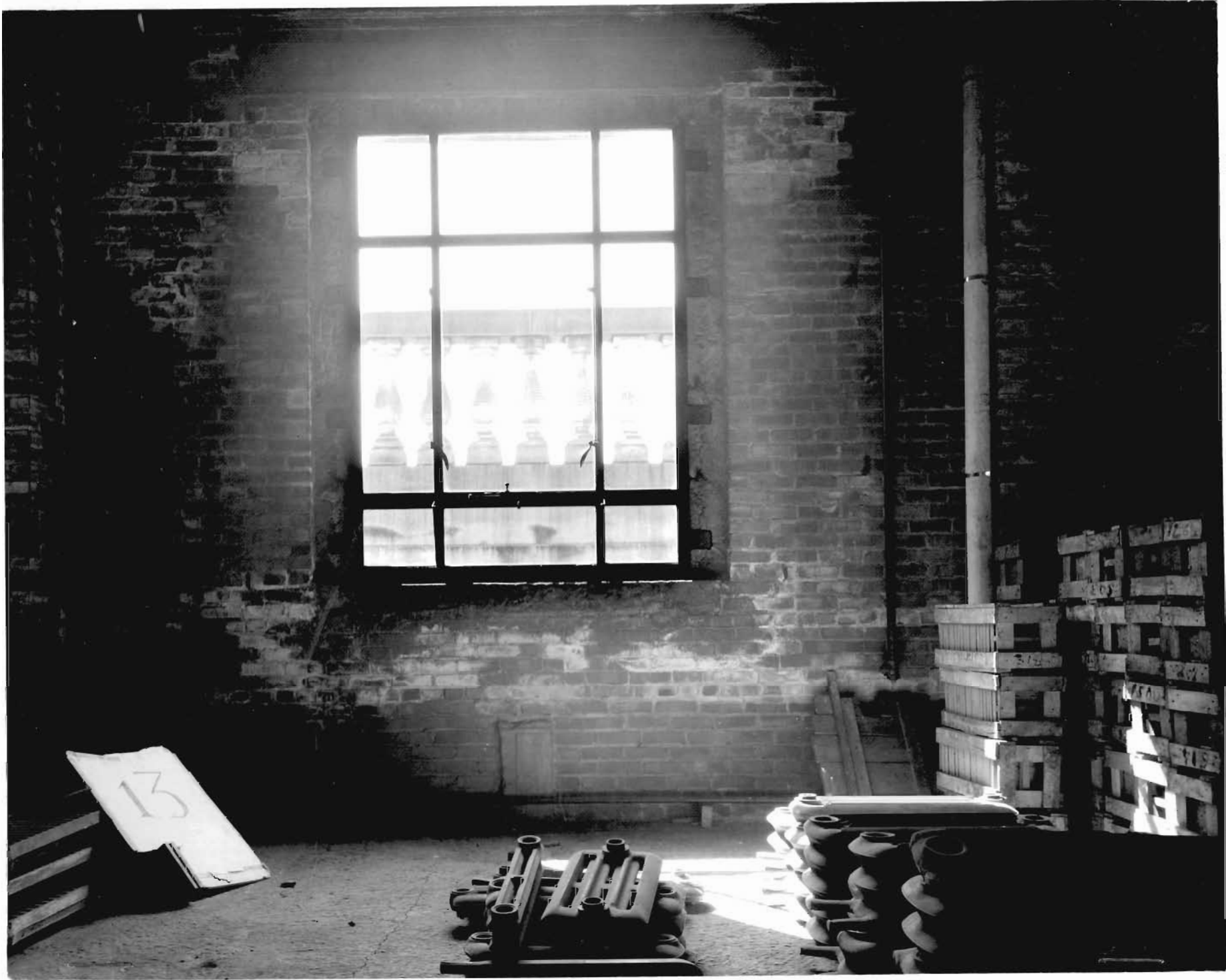
Weather Condition	Clear, bright sunshine
Time of Day	12.05 p.m.
Location of Window	4th from S.W. corner
Location of Camera	24 ft. from window at desk height

P. 27



5. VIEW OF WINDOW ON NORTH SIDE OF 23RD FLOOR SHOWING POSITION OF BALUSTRADE OUTSIDE OF WINDOW

Weather Condition	Clear, bright sunshine
Time of Day	12.45 p.m.
Location of Window	2nd from N.W. corner
Location of Camera	19 ft. from window at desk height



6. VIEW OF WINDOW ON WEST SIDE OF 23RD FLOOR SHOWING POSITION OF BALUSTRADE OUTSIDE OF WINDOW

Weather Condition

Clear, bright sunshine

Time of Day

12.50 p.m.

Location of Window

4th from N.W. corner

Location of Camera

19 ft. from window at desk height

P. 28



7. VIEW OF WINDOW ON SOUTH SIDE OF 23RD FLOOR SHOWING POSITION OF BALUSTRADE OUTSIDE OF WINDOW

Weather Condition

Clear, bright sunshine

Time of Day

1.00 p.m.

Location of Window

3rd from S.W. corner

Location of Camera

20 ft. from window at desk height

P. 28



8. VIEW OF WINDOW ON EAST SIDE OF 23RD FLOOR SHOWING POSITION OF BALUSTRADE OUTSIDE OF WINDOW

P. 28
Weather Condition

Clear, bright sunshine

Time of Day

1.05 p.m.

Location of Window

4th from N.E. corner

Location of Camera

20 ft. from window at desk height

SUN LIFE VALUATION APPEAL

Valuation by Owen Lobley

EXHIBIT "B"

P. 8.

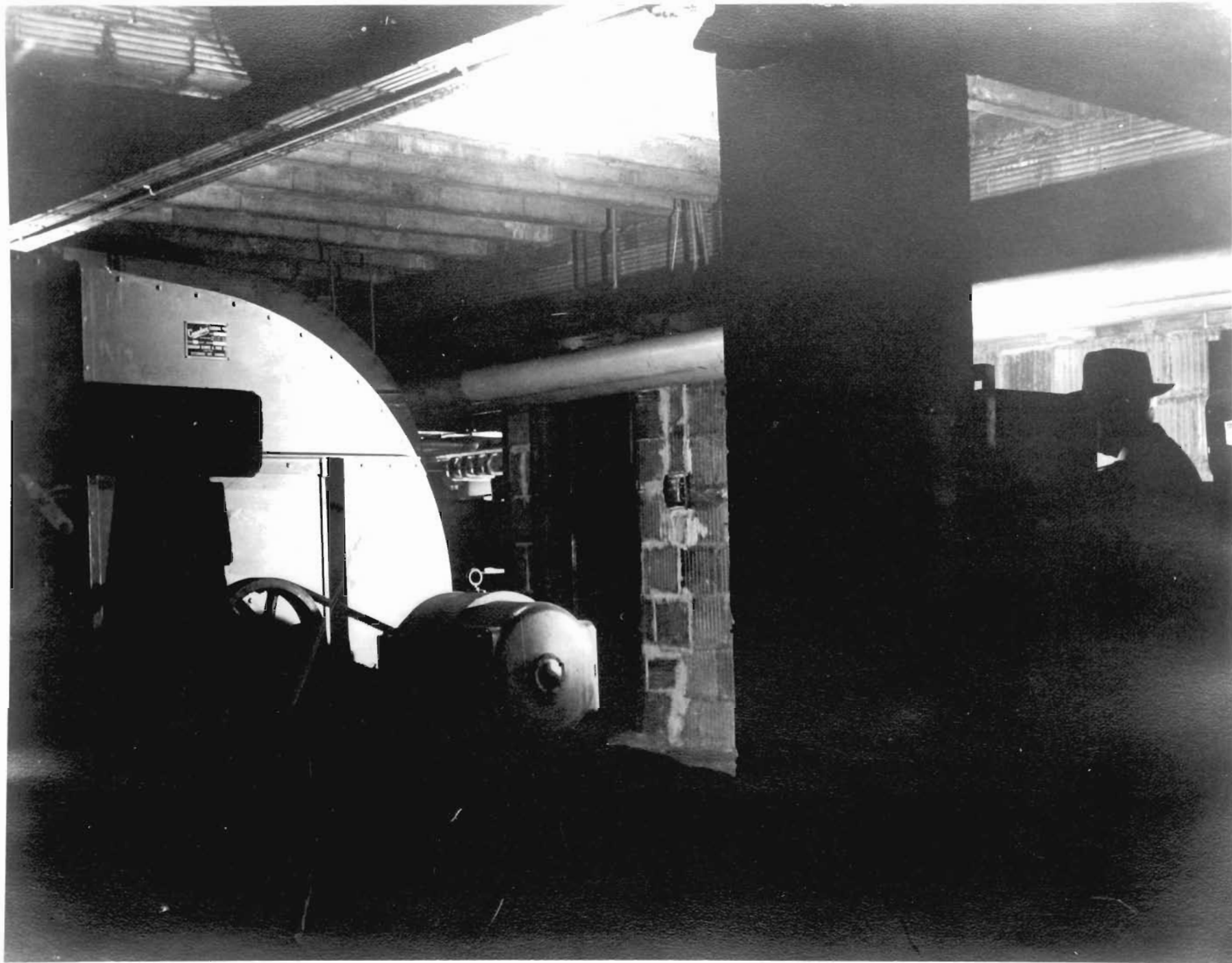
3:1:43







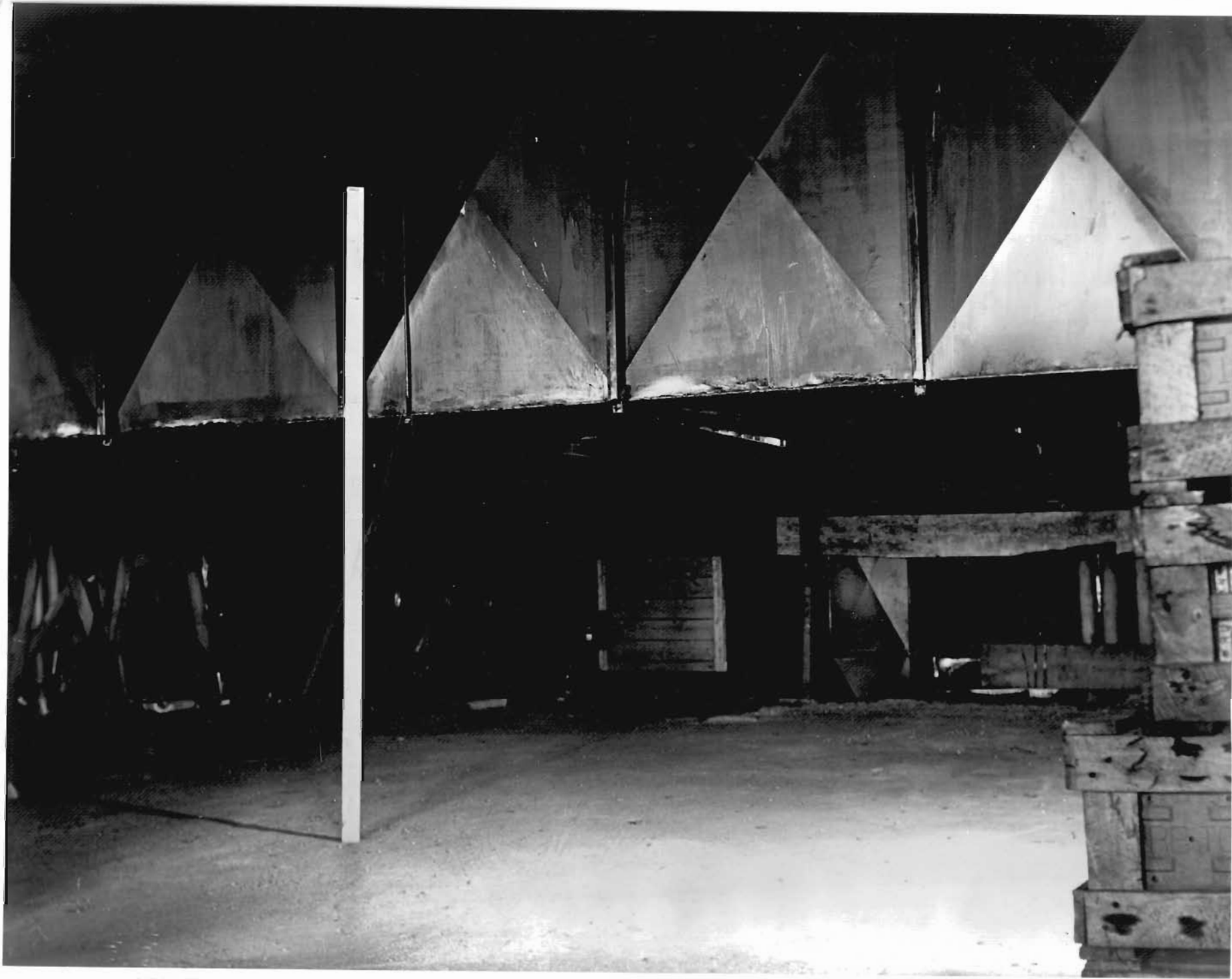




1. 24TH FLOOR (PIPE & DUCT FLOOR) SUN LIFE BUILDING, MONTREAL.

R.26
The only door to the only stairway leading out of this floor is shown in this photograph. It leads out of a fan room, within 4'2" of the fan and motor shown. The stairway cannot be reached directly from the South and West sides. From the East side the only 'passage' to the stairway is less than 4'0" high, under the duct shown on photograph No.2. From the North side the only passage is but 23 inches wide between ducts and other obstructions.

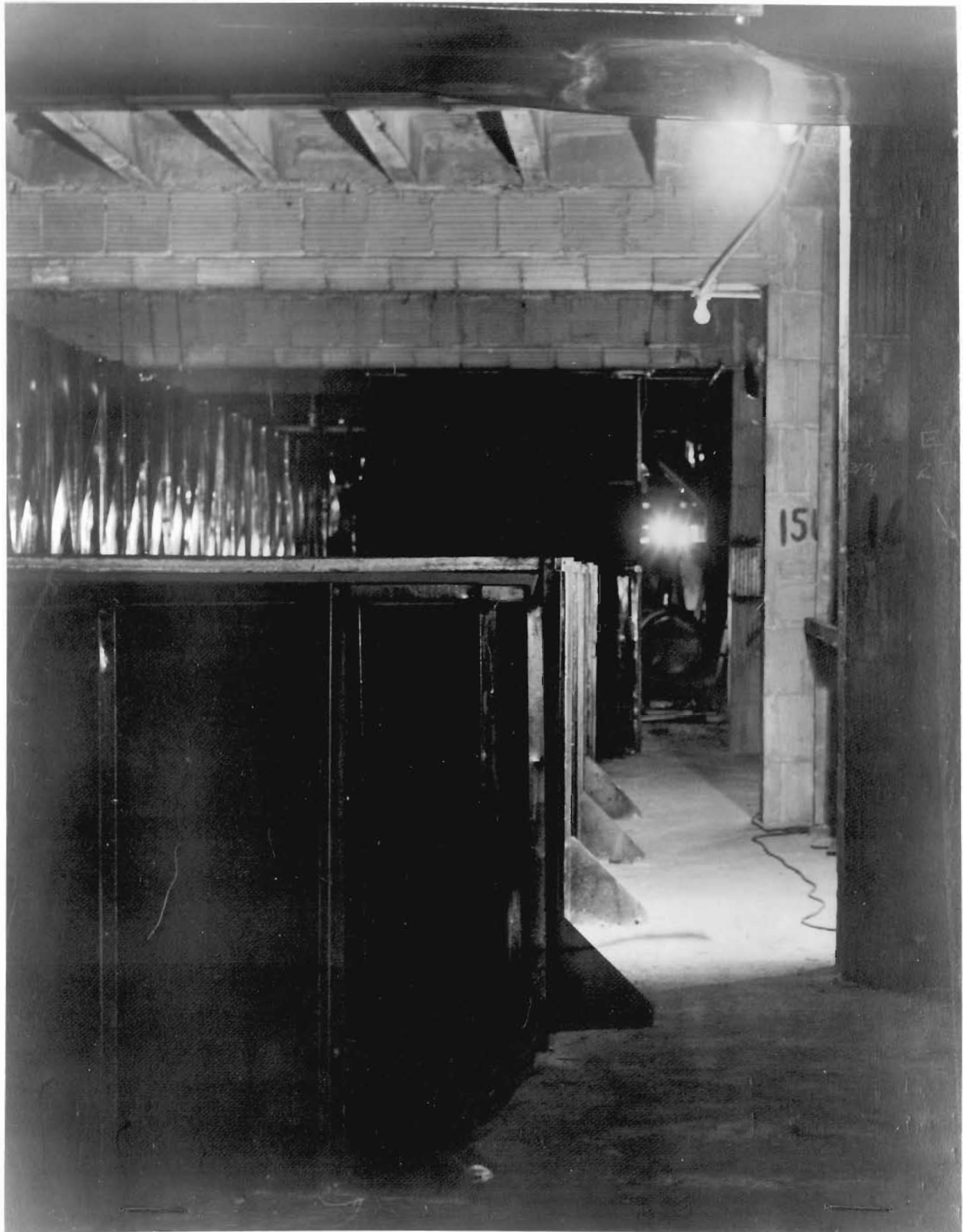
Under "The Law and Regulations respecting the Safety of the Public in Public Buildings", R.S.Q., 1925, Chapter 176 and amendments Division VI, paragraph 12-2 and paragraph 15, this floor cannot be occupied by the public.



2. 24TH FLOOR (PIPE & DUCT FLOOR) SUN LIFE BUILDING, MONTREAL.

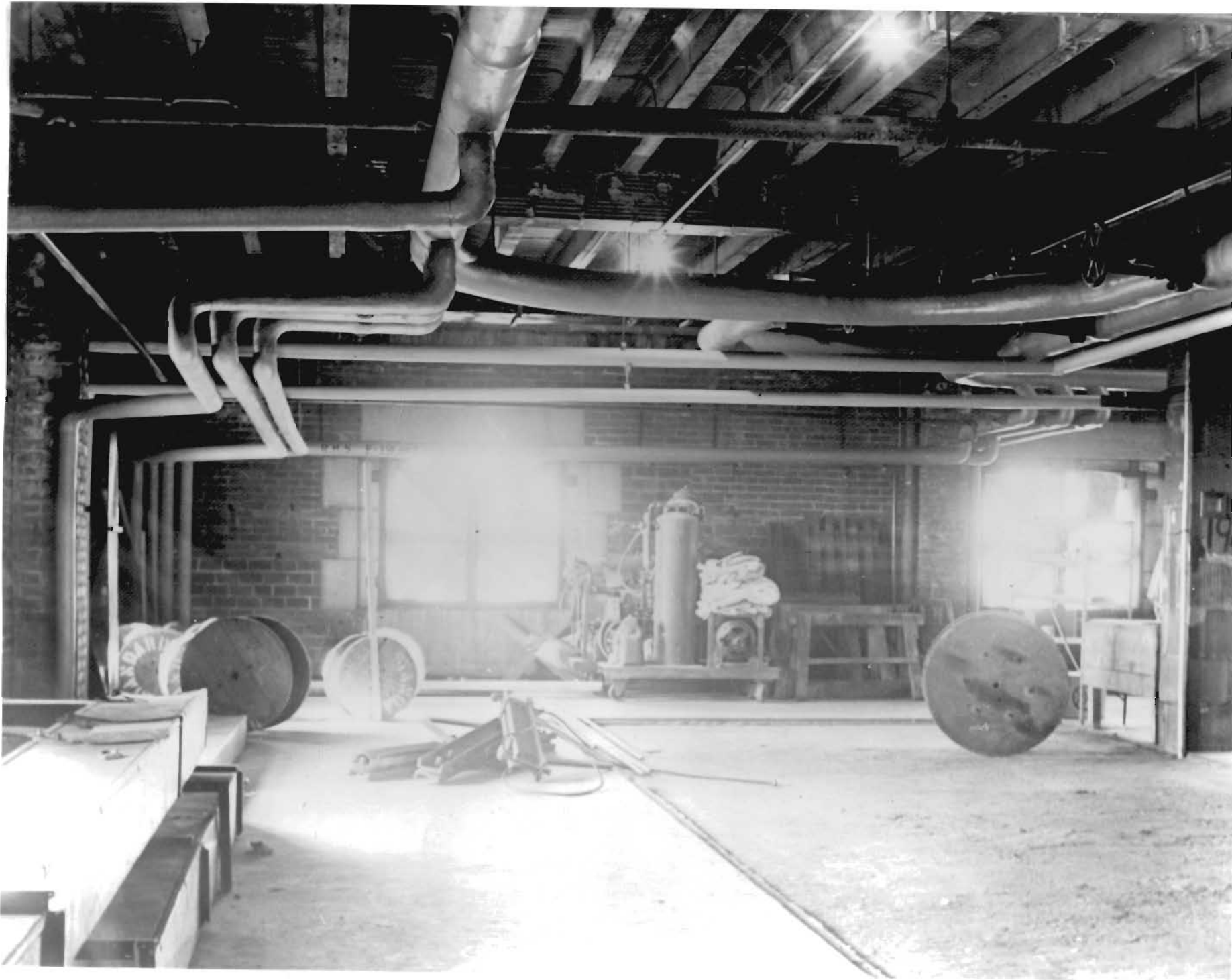
The only means of reaching the stairway from the East side of this floor is to crawl under the duct shown in this photograph. The 'Rod' is 6'0" long, the duct is approximately 3'11" above the floor.

P. 26.



3. 24TH FLOOR, SUN LIFE BUILDING, MONTREAL.

P. 26.
The passageway shown in this photograph is the only access to the Stairway from the North side of the floor. It has an unobstructed width at the floor of barely 23 inches.



4. 24TH FLOOR (PIPE & DUCT FLOOR) SUN LIFE BUILDING, MONTREAL.

View of the north-west corner of the floor showing Heating Mains. The Rod standing below the lettering on the Main is 6'0" long. The ducts shown on the floor in the lower left-hand corner will eventually be carried around the outside walls from left to right in the photograph, and the result will be as shown on photographs 7 and 8.

P. 26



5. 24TH FLOOR (PIPE & DUCT FLOOR) SUN LIFE BUILDING, MONTREAL.

View of East side of building looking North. The only location for a passage around this side of the building will be beneath the duct, which, as shown by the 6-foot measuring rod, is about 5'2" from the floor. The only access to stairs is under the large duct, shown in photograph No.2, where the headroom is only 3'11".

P. 26



6. 24TH FLOOR (DUCT & PIPE FLOOR) SUN LIFE BUILDING, MONTREAL

View of the West side of the floor looking South. The distribution duct shown on this side of the building will eventually be repeated on the South, East and North sides.

P.26



7. 24TH FLOOR (PIPE & DUCT FLOOR) SUN LIFE BUILDING, MONTREAL.

Another view of the West side of the floor. The ducts make passage along this side of the floor impossible.

P. 26.

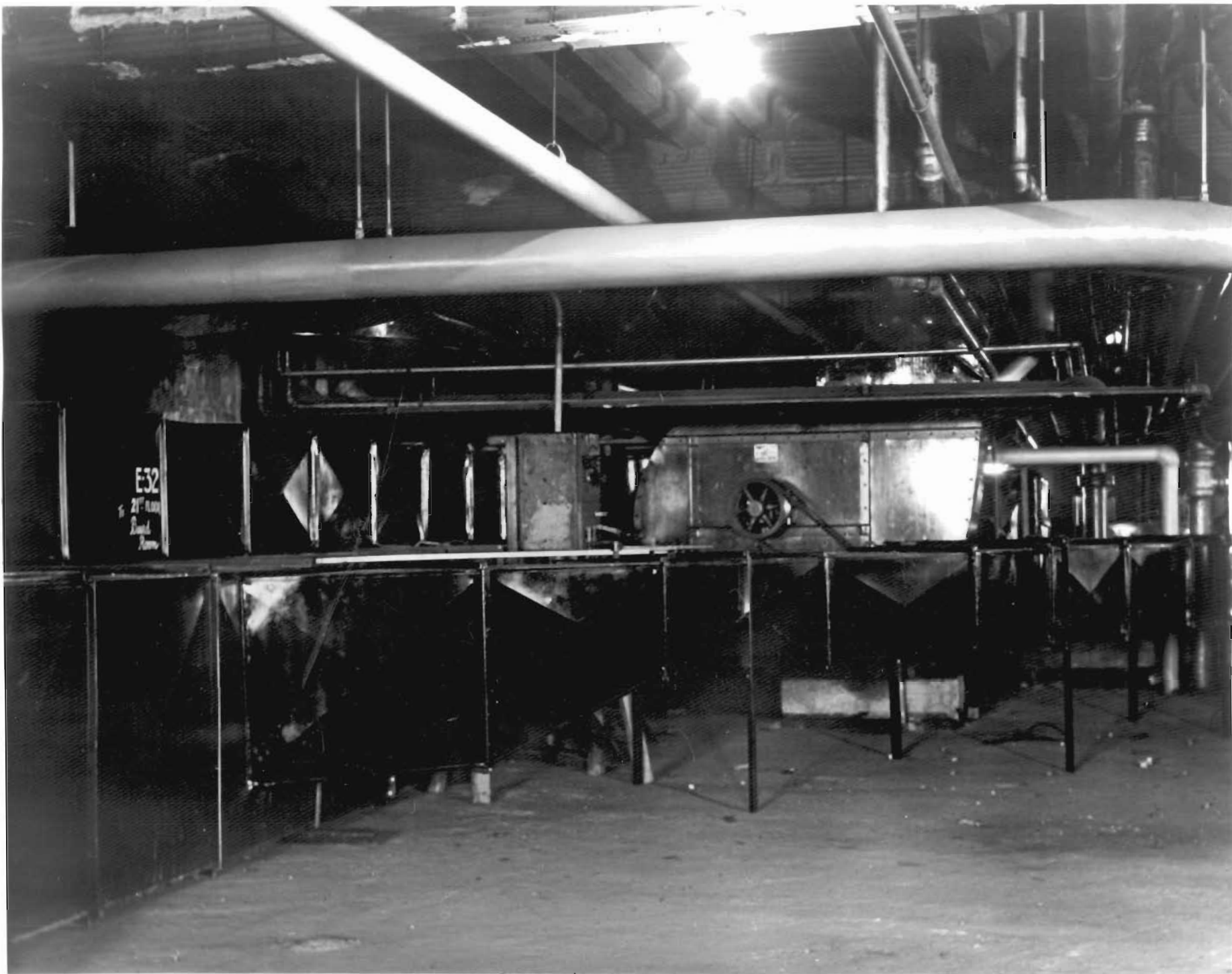


8. 24TH FLOOR (PIPE & DUCT FLOOR) SUN LIFE BUILDING, MONTREAL.

West side of the floor looking North. Ducts of approximately the same size as those shown on the floor at the outside wall will eventually be run around the East and North sides of the building, which at present are free from this obstruction.

The ducts are to provide ventilation for the 23rd and 22nd floors. The space is completely obstructed as they permit of no passage around this side of the floor.

P. 26.



9. 24TH FLOOR (DUCT & PIPE FLOOR) SUN LIFE BUILDING, MONTREAL.

View of part of South side of this floor.

P.26