

---

STATUTORY INSTRUMENTS

---

**2014 No. 1871**

**HIGHWAYS, ENGLAND**

**The Lincolnshire County Council (River Witham Bridge) Scheme 2013 Confirmation Instrument 2014**

*Made - - - - 8th July 2014*

*Coming into force in accordance with article 1*

The Secretary of State for Transport makes this Instrument in exercise of powers conferred by section 106(3) of the Highways Act 1980<sup>(1)</sup> and now vested in the Secretary of State<sup>(2)</sup>:

**1.** This Instrument may be cited as “The Lincolnshire County Council (River Witham Bridge) Scheme 2013 Confirmation Instrument 2014” and shall come into force on the date on which notice that it has been confirmed is first published in accordance with paragraph 1 of Schedule 2 to the Highways Act 1980.

**2.** The Lincolnshire County Council (River Witham Bridge) Scheme 2013 Confirmation Instrument 2014 (“the Scheme”) is hereby confirmed with modifications.

**3.** The Scheme as confirmed is set out in the Schedule hereto (including the plans) and copies of the Scheme with its accompanying plans as modified are deposited at the offices of the Department for Transport, Floor 13 (IMD), Ashdown House, St Leonards on Sea, Hastings, East Sussex, TN37 7GA and at the offices of Lincolnshire County Council, County Offices, Newland, Lincoln, LN1 1YL.

Signed by authority of the Secretary of State for Transport

8th July 2014

*M R Fawcett*  
A Senior Civil Servant in the  
Department for Transport

---

(1) 1980 c.66.  
(2) S.I. 1981/238.

THE SCHEDULE

Regulation 3

THE LINCOLNSHIRE COUNTY COUNCIL (RIVER WITHAM BRIDGE) SCHEME 2013

The Lincolnshire County Council (“the Council”) make this Scheme in exercise of their powers under Section 106(3) of the Highways Act 1980 and of all other powers enabling them in that behalf:-

1. The Council are authorised to construct over the navigable waters of the River Witham the bridge specified in the Schedule to this Scheme as part of the highway they are proposing to construct from the A15 Wragby Road East roundabout to the A15 Sleaford Road in the Parish of Greetwell in the District of West Lindsey, the Parish of Canwick, the Parish of Branston and Mere and the Parish of Bracebridge Heath, all in the District of North Kesteven and the Abbey Ward of the District of Lincoln all in the County of Lincolnshire.

2. This Scheme may be cited as The Lincolnshire County Council (River Witham Bridge) Scheme 2013.

Given under the Common Seal of the County Council of Lincolnshire on the 22nd day of July 2013

THE COMMON SEAL of the Council of the County of Lincolnshire was hereunto affixed in the presence of:-

Authorised Officer

THE SCHEDULE  
TO THE SCHEME

Regulation 3

Plans and Specifications of the River Witham Bridge

The location and general design of the Bridge are shown on plan numbered B/1054738/1700/RW/D001 Rev.0.2 marked “The Lincolnshire County Council (River Witham Bridge) Scheme 2013”.

***Points of Commencement and Termination***

Commencing from a point to the north of the River Witham 140 metres north of the middle of the Sustrans cycle route (measured along the line of the proposed highway).

The bridge will pass over the North Delph the River Witham the South Delph, Soak Dyke/ Canwick Fen Drain.

Terminating on the south side of the River Witham at a point 85.2 meters south of the middle of the Sustrans cycle route (Measured along the line of the proposed highway).

***Spans***

A five span structure, from the north the individual square spans are 36.23 metres, 39.42 metres, 52.00 metres, 52.00 metres and 36.27 metres. The span over the River Witham is 52.00 metres. The overall span of the structure is 215.92 metres.

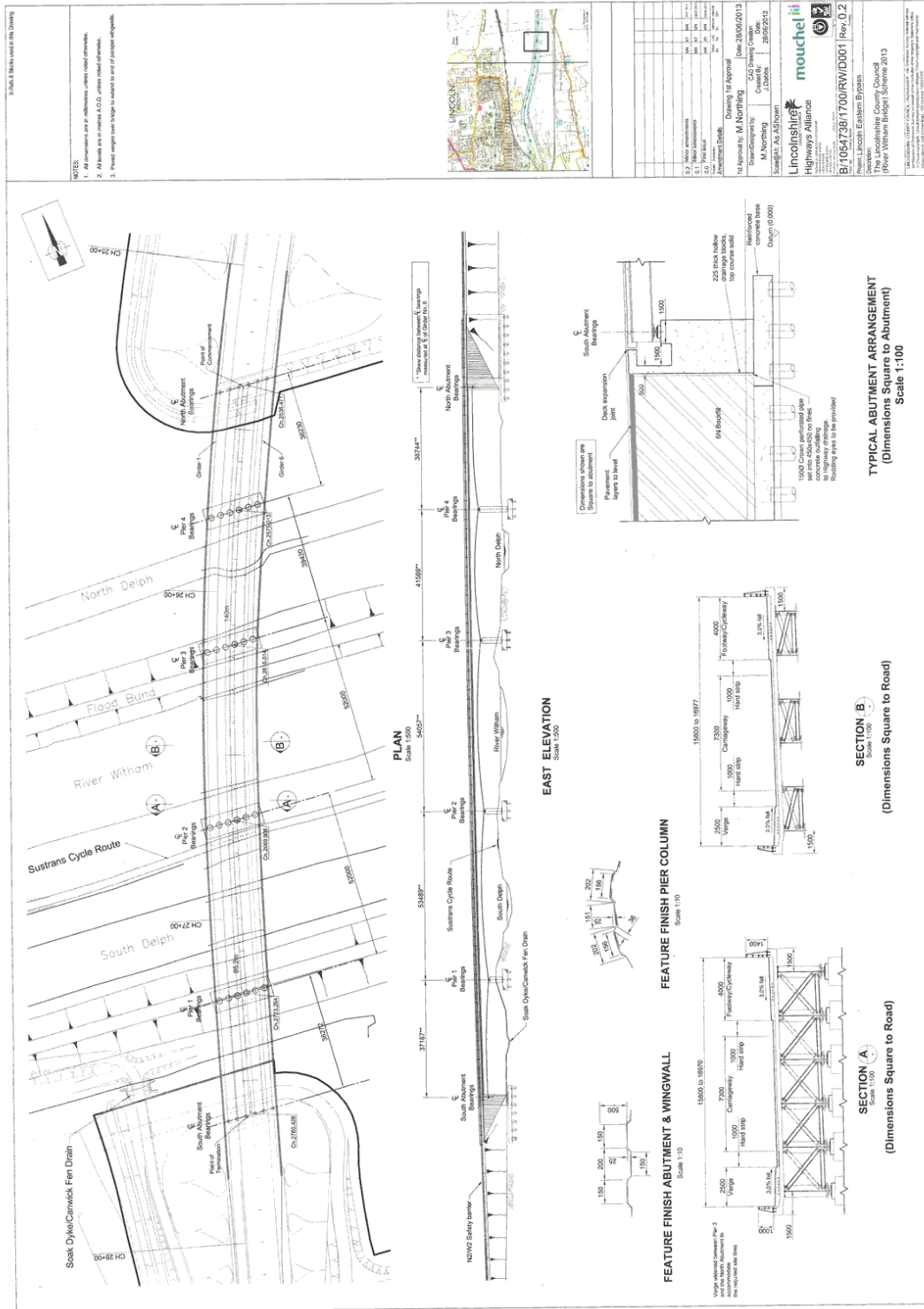
***Headway and Waterway***

The Headway shall not be less than 5.20 metres above normal water level of 2.90 metres Above Ordnance Datum. This Headway shall be maintained over 50 percent of the River Witham width at normal water level.

### **Overall Dimensions**

The overall square Bridge width will vary from 15.800 metres excluding parapets at the south abutment end to 16.970 metres excluding parapets at the north abutment. The Bridge will carry a 7.3 metre wide carriageway, bordered on either side by hard strips of one metre in width. A 4.0 metre wide cycle / footway will be provided on the west side. On the east side, there will be a hardened verge that varies in width from 2.500 metres at the south abutment to 3.670 metres at the north abutment.

**Status:** This is the original version (as it was originally made). This item of legislation is currently only available in its original format.



---

## EXPLANATORY NOTE

*(This note is not part of the Order)*

This instrument confirms a scheme to construct over the navigable waters of the Wyrley and Essington Canal the bridge specified in the Schedule to this Scheme as part of the new highway which they are proposing to construct from the A15 Wragby Road East roundabout to the A15 Sleaford Road in the Parish of Greetwell in the District of west Lindsey, the Parish of Canwick, the Parish of Branston and Mere and the Parish of Bracebridge Heath, all in the District of North Kesteven and the Abbey Ward of the District of Lincoln all in the County of Lincolnshire.

The Secretary of State has modified this scheme as follows:

1. In the Schedule to the Scheme the paragraph titled OVERALL DIMENSIONS has been reworded.
2. In the Schedule to the Scheme in the paragraph titled “Spans” the word “square” has been added.
3. Schedule Plan B/1054738/1700/RW/D001 Rev.0.1 has been replaced with Schedule Plan B/1054738/1700/RW/D001 Rev.0.2.